

# THE KENNEBUNKPORT



The Kennebunkport is a showcase of timeless New England architecture. Its wraparound porch and large rear deck invite leisurely living, while the spacious living room and fireplace are perfect for family gatherings. The open dining area adjoins an expansive kitchen with center island and large pantry. There's a master bedroom suite with full bath on the first floor and two large upstairs bedrooms sharing a second full bath—making plenty of room for a growing family. Three gable dormers add light, space, and a traditional look to this classic post-and-beam design. An attached two-car garage and large bonus room above complete this plan.

**3 Bedrooms**  
**2 Full Baths**  
**1 Half Bath**  
**Total Square Footage: 3,149 Sq. Ft.**



Artist's rendering. Actual homes may vary.

# THE KENNEBUNKPORT



3 Bedrooms

2 Full Baths

1 Half Bath

Total Square Footage:  
3,149 Sq. Ft.

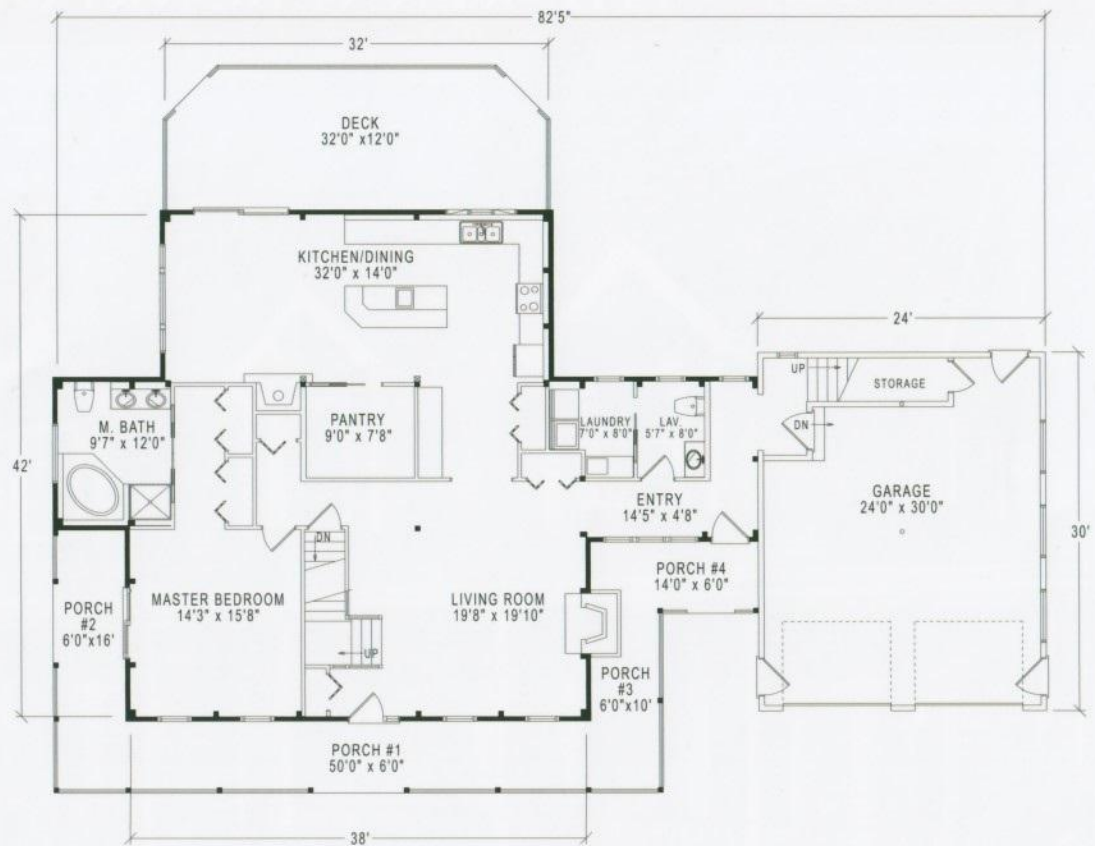
Package Price Shown  
on PDF download



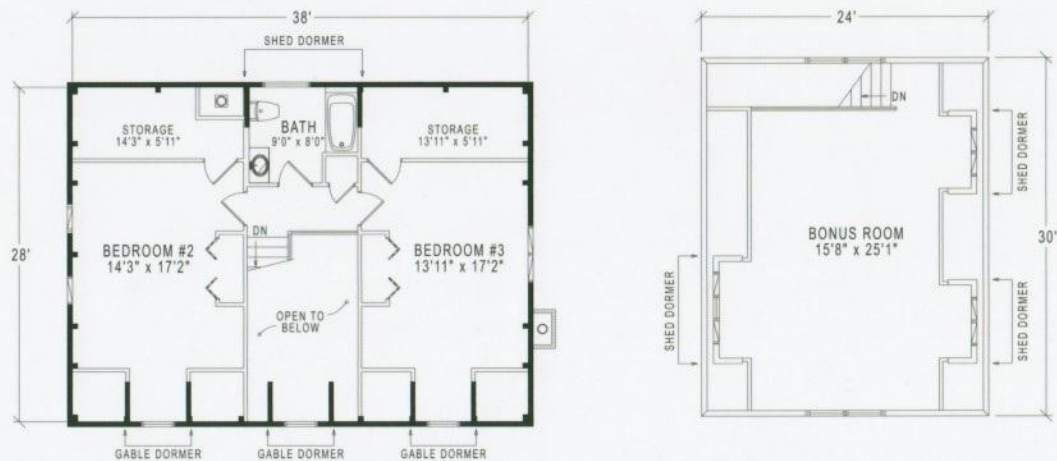
1-800-624-2797

e-mail: [info@classicpostandbeam.com](mailto:info@classicpostandbeam.com)

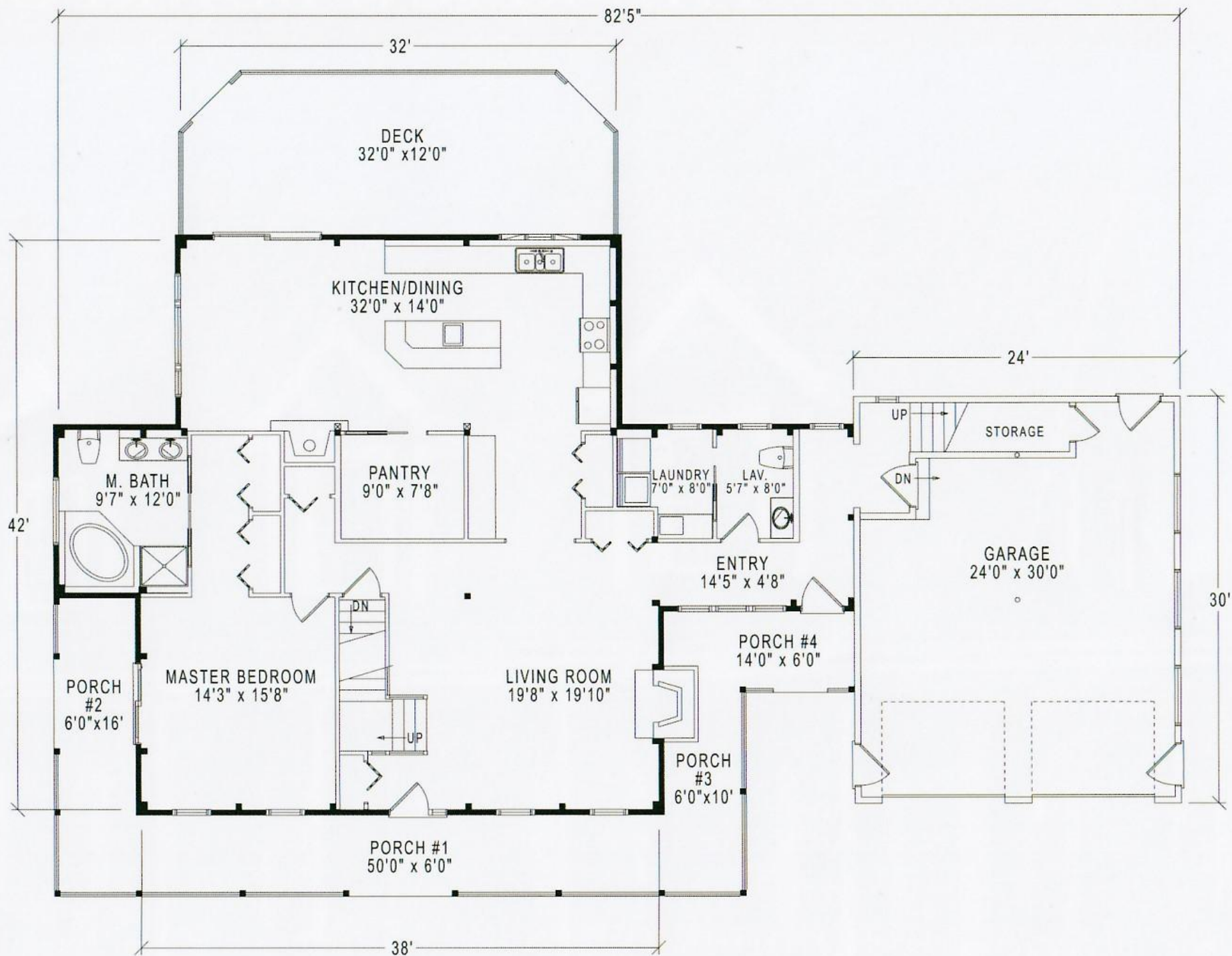
[www.classicpostandbeam.com](http://www.classicpostandbeam.com)



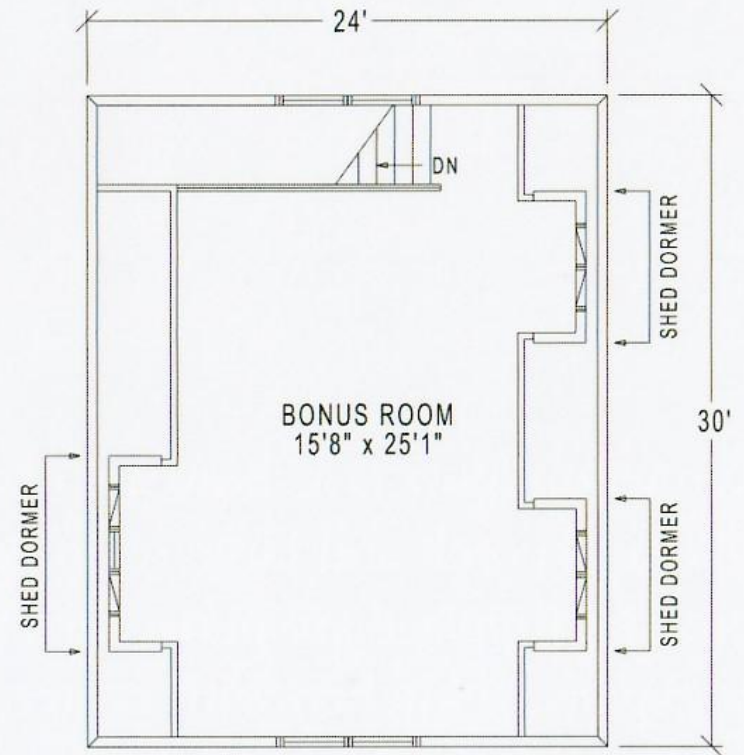
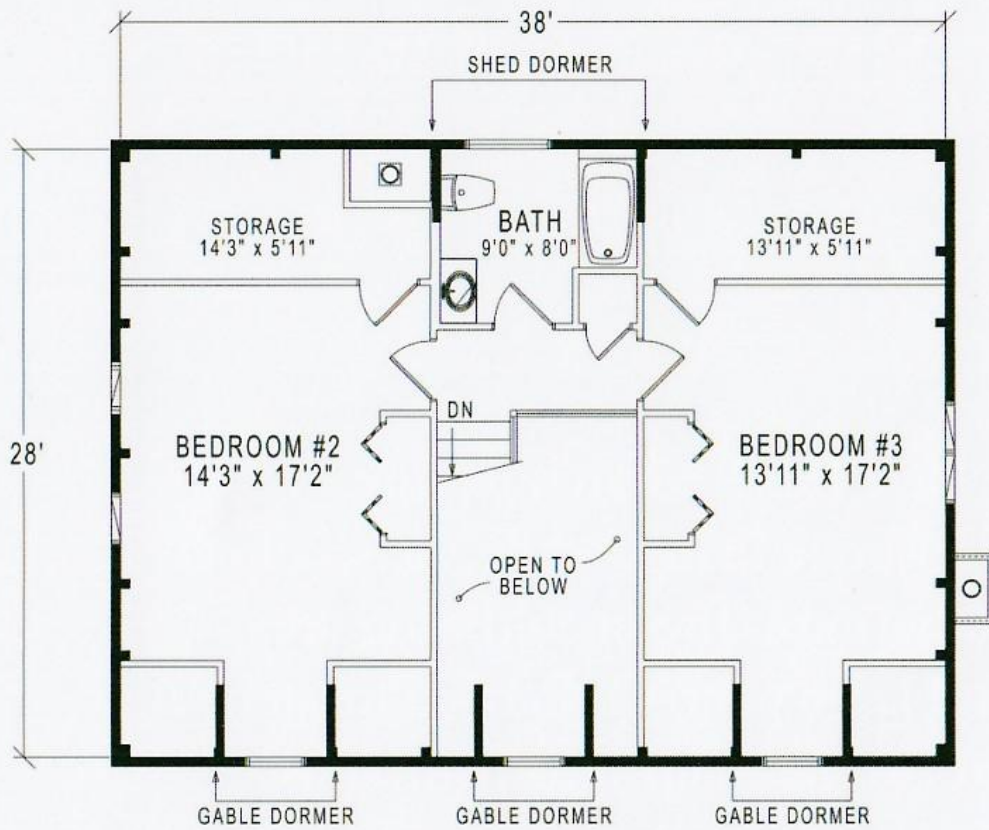
**FIRST FLOOR 1,806 SQUARE FEET**



**SECOND FLOOR 1,343 SQUARE FEET**



**FIRST FLOOR 1,806 SQUARE FEET**



**SECOND FLOOR 1,343 SQUARE FEET**